

# S. R. Leland & Son

Worcester, Massachusetts

- 1839 Samuel Reeves Leland (1817-1885) starts a music and umbrella store in Worcester.
- 1840 Leland is selling pianos over Mr. Harris's book store and starts a singing school in September.

**Primary Singing School.**  
**T**HE subscribers propose to open a *SINGING SCHOOL* in the Hall over Mr. Harris's Book-store, on **WEDNESDAY EVENING, Sept. 16th.** All persons wishing to attend can obtain tickets at Mr. Harris's Bookstore. Tickets \$3 00 for 24 lessons.  
**EMERY PERRY.**  
**S. R. LELAND.**  
 Sept. 9.

- 1841 Leland is listed as a local agent for the *Musical Reporter*. In September he opens a music store with George Putnam at #6 Brinley Row (#170 Main St., now a parking lot). Their ad from Sept 15 lists violins, cellos, double basses, clarinets, bassoons, sheet music, pianos, umbrellas & parasols; the last two items being of their own manufacture. They were the first Chickering piano agent in New England (photo 2 author's collection).

**STRANGERS! CITIZENS OF WORCESTER!**  
 And those in the habit of sending to Boston and New York for Music, will find  
**LELAND & PUTNAM'S**  
 Music Establishment, No. 6 Brinley Row,



Music Merchandise constantly for sale. Music bound in a superior manner, with spring backs.  
 Oct 13, if

A VERY desirable place for obtaining all the most fashionable, and latest Music publications, together with new foreign Music.  
 A great variety of Music and Music bound in a superior manner.  
**S. R. LELAND.**  
**G. S. PUTNAM.**

- 1842 An April ad shows that Leland had separated from Putnam and was now at #8 Brinley Row. Later ads show he is selling melodeons, stringed & brass instruments, Chickering pianos & parasols.

**JUST RECEIVED.**  
**V**IOLINCELLOS of superior manufacture;  
 Double Bass's do do  
 Trombones; Bugles (B b and E b) and Flutes from 1 to 8 keys, for sale cheap— for cash or approved credit by  
**S. R. LELAND,**  
 May 18. No. 8 Brinley Row.

**CLARENDON HARRIS,**  
**Worcester Book Store,**  
 HAS FOR SALE A  
 GENERAL ASSORTMENT  
 OF  
**BOOKS, STATIONERY,**  
**BLANKS, & BLANK BOOKS.**



Copy of Gio. Paolo Ma  
 Fecit Dresdae. Ann  
 Especially made  
 Leland & Son Worces

BY  
**SAMUEL R. LELAND.**  
 WORCESTER  
 Published by **S. R. LELAND,** 8 Brinley Row.

- 1843 Leland sells the store to Caleb Loring, who planned to keep the same merchandise while Leland concentrated on piano and organ instruction (ad). Leland became the founding music director for the College of the Holy Cross and stayed with this position until 1864.
- 1844 A July ad shows Leland selling pianos at #8 School St (photo 1).
- 1845 S. R. Leland, music teacher, #8 School St (directory).
- 1846 Leland advertises for piano instruction.
- 1850 Leland advertises a singing school over Harris's book store and the city directory lists him as a music teacher at Warren Block with a home at #42 Front St.
- 1852 Leland has a store at #42 Front St by September and advertises instruction for piano, organ, flute, violin & singing as well as selling pianos.
- 1862 Son Frank Augustus Leland (1846-1915) starts working for his father at about this time (*New Langwill Index*) (photo 3 from 1894 *Music Trade Review*).
- 1864 A new store was under construction in August for Leland at #205-1/2 Main St; a two-story structure built in an existing passage (now gone).
- 1866 Samuel Leland, instrument dealer & teacher, #205-1/2 Main St (directory).
- 1870 An article in the local newspaper refers to S.R. Leland & Son's music store, which is the earliest reference found for the name change. Advertising continues as Leland & Co. until 1881.
- 1872 Samuel Leland had broken ground on a lot on Lincoln St for his residence (photo 4, #118 Lincoln).
- 1873 Leland is selling cornets made by McFadden & Beaumont of Worcester [McFadden only sold them this year before leaving town for copying maker Isaac Fiske, his former employer.](Robb Stewart photos). Leland's address is now #343 Main St.

**Another Piano Forte.**  
 THE subscriber has just received another beautiful Mahogany Case PIANO FORTE, which will be sold cheap for cash, and is warranted perfect for tone and workmanship.  
 Please call and examine the above instrument at No. 8 School street. S. R. LELAND,



McFADDEN & BEAUMONT  
 MAKERS  
 WORCESTER MASS  
 S. R. Leland & Co.  
 343 Main St. Worcester,  
 Mass.  
 Sole Agents.

- 1874 Ad from September has Leland still at #343 Main St.
- 1875 By November, S. R. Leland & Co had recently moved to #446 Main St opposite City Hall. The building (now gone, illustration at right from 1885) was 23' x 83' and four stories tall. At that time the basement was used for packing & shipping, the first floor was the sales room & pianos, the second floor for organs, the third floor for pianos and band instruments, and the fourth floor for storing organs. Of note regarding instruments was a recent agreement made with A. Lecomte & Co. of Paris (photo 2, Horn-u-copia.net) to import their best instruments.
- 1876 Leland owned the back section of a building of the Burnside Estate on Main St that suffered a \$100 loss to a fire. No mention was made of what he used it for.
- 1878 An ad in April shows that Leland was repairing brass inst.
- 1879 Charles H. Bowker (1848-1929), a junior partner in the company, was made head of the new band instrument department.
- 1881 Charles Bowker, head of the instrument department, was repairing an old Revolutionary War drum. December ads change from Leland & Co to Leland & Son.
- 1883 Bowker was retiring as head of the instrument department after ten years there. They were selling Missenharter instruments (photo 3 by author).
- 1884 Ads show they had brass instruments for sale or rent.
- 1885 Leland produces a Band Catalog showing Missenharter and Leland "Light Piston" brass. They had recently enlarged their repair department and hired William Peter to make Violins (below and photo 4 are an early valve trombone with serial #1800, author's photos).



- 1886 The earliest ad I have found for the Eclipse model cornet (photo 5 by author) is from August. These were the first brass instruments to be built by Leland and were probably built under the direction of Charles Anger (1847-?). Anger was likely a former employee of Isaac Fiske, who had recently sold his business to Conn.

1886 An October ad has both Missenharter and Eclipse band instruments for sale (August ad at right).

One of the earliest cornets found is #160 below (author's photo)



**ECLIPSE CORNETS!**

Perfect in Tune!  
Elegant in Finish!

None better, is the verdict of Cornet Players.

Send for Price Lists. Manufactured by

**S. R. LELAND & SON,**  
416 Main St., Worcester.



1887 A March news article states that, "E. M. Macauley will give popular solos on the Eclipse cornet, a new style instrument manufactured by the Lelands."

1887 "The celebrated Eclipse band instruments made solely by S.R. Leland & Co met with high approval by all bandsmen and artists." "...since two or three years our business has more than doubled itself." (*MTR*, May). Frank Leland made a trip in June to Europe to make arrangements for enlarging his band instrument manufacturing (*MTR*).

1888 July ad lists Eclipse cornets & trombones (#198 photos 2 & 3 from internet auction). The early ones have an ivy engraving. C. A. Farnum was the manager of the band instrument dept (ad).

1888 Leland receives a letter from cornet player Bowen Church (1860-1923) praising the high quality of the Eclipse cornet.

"Friend Leland: I use the Eclipse you have made for me exclusively, and of all the beautiful instruments I have ever played I think yours exceeds them all. It has the brilliant tone of Courtois and the body of Besson, and better in tune than any I have yet tested. I have played over a hundred different solos on it and I must say I am very pleased with it. The action is very beautiful and it blows very easy. Have thoroughly tested it in military band and orchestra and shall use nothing else. I am glad I shall not have to buy any more imported instruments as I believe we have better ones at home now. Yours, Bowen R. Church"

1889 Ad shows they manufacture Eclipse brass & violins.



- 1893 First ad found in June for “Ideal” band instruments which were imported (photo 1 alto #3132 by author). They start a monthly publication called “The Eclipse” in April.
- 1894 First ad found for “Church Model Eclipse” cornet. These closely match cornets #536 (photos 2 & 3, author’s collection) to #740 (photo 4 by author).

THE NEW IMPROVED PATENT CHANGEABLE  
 HIGH AND LOW PITCH SLIDE TROMBONES

Are the best on the market, most accurate in tune in either pitch, and PERFECTLY EASY to blow in every scale.

Send for prices of them to  
**S. R. LELAND & SON,**  
 WORCESTER, MASS.



**ECLIPSE SOLO CORNETS**  
 Celebrated for Perfect Intonation. Guaranteed in Correct Tune.  
 EASIEST TO BLOW. Solid in Tone, possessing a Rich, Mellow quality. Equalled by none.

**ECLIPSE WIDE RIM MOUTHPIECES,**  
 For low and high tones, equally easy on both registers.  
 For Cornets, \$1.50. Upright Instruments, \$2.00.

Send 10 cts. for Vest-Pocket Dictionary. Full of Useful Information.  
 Mention "Leader."



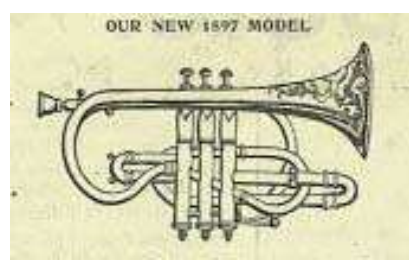
- 1894 An ad says that the Eclipse brass are made from the best French or German brass added to imported valves made to Leland’s design. They also mention the “Ideal” line of less expensive brass in January and change it to “New Ideal” by August.

An October ad details each part of the store:

- Basement: manufacturing Eclipse instruments, repairs, and retailing band instruments
- 1<sup>st</sup> Floor: sheet music, stringed insts, music boxes
- 2<sup>nd</sup> Floor: pianos
- 3<sup>rd</sup> Floor: used pianos, new organs
- 4<sup>th</sup> Floor: manufacturing Eclipse violins & repairs

Frank Leland is granted patent #530,781 in December for adding a pitch change valve to a slide trombone.

- 1897 Ads below show the “New 1897 Model” Eclipse cornet which also shows up in 1898 ads. The closest match to this is cornet #625 (photo 5, auction sale).



**THE ECLIPSE**  
OUR NEW 1897 MODEL

WARRANTED PERFECT  
TUNE IN TONE WORKMANSHIP.



THESE CORNETS ARE EASY BLOWING "CLEAR AND BRILLIANT TONE." EVERY ONE FULLY TESTED BY AN EXPERT BEFORE LEAVING FACTORY.

Mouthpieces of all Kinds a Specialty.

GET THIS OUT AND SEND FOR VEST-POCKET DICTIONARY AND CATALOGUE.  
BAND INSTRUMENTS TO RENT. LARGEST LINE IN NEW ENGLAND.

MAKERS OF THE CELEBRATED WIDE-RIMMED MOUTHPIECE.

**S. R. LELAND & SON, 446 Main Street, Worcester, Mass.**



\* **Season, 1898.** \* **ATTENTION! BANDSMEN** \*

IF YOU WANT } to trade your old a new Cornet or other to rent a set or single } INSTRUMENT

Be sure and write us for our terms of sale and exchange  
...ECLIPSE...

And our special cash discount on



the celebrated Cornets and Band Instruments, etc.

✂ Cut out this "ad" and send us when you write....

**S. R. LELAND & SON - 446 Main St., Worcester, Mass.**



- 1900 Leland had plans to renovate their store front with large glass windows on the first two floors (MTR). Charles Anger\* is listed in the census as cornet maker.
- 1901 The word "Trademark" shows up for the first time in Eclipse ads in August and may be when they start marking the bells with this (about cornet #920 and later, photo 4).
- 1902 An undated ad shows the "Clement" model Eclipse cornet which refers to Fred Clement, cornet soloist for the Reeves American Band of Providence, RI from 1902 to 1904 under Herbert Clarke. This design appears on #846 and later (photos 2 & 3 by author).



**ECLIPSE**

Cornets and Instruments are indorsed by Leading Players on these Instruments; they say they are Perfect, and that our System of selling is easy, and that our Enterprise should be encouraged.

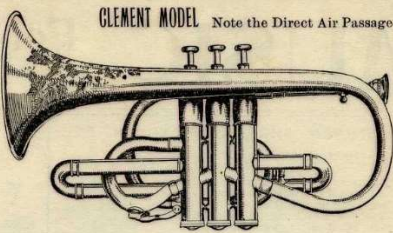
Rare Bargains in Second hand Instruments.

BAND AND ORCHESTRA MUSIC.

**S. R. LELAND & SON,**  
**446 MAIN ST., WORCESTER, MASS.**

INSTRUMENTS TO RENT.  
WIDE RIM MOUTH PIECES.

Cut out and send for Catalogues




Fred Clement also lived in Worcester and was advertising for lessons in this 1916 ad.

**CORNET PLAYERS**  
**30 Practical Lessons, using Arban's Book, \$2.00. Recommended by many good men.**  
 "Weak Lips: Cause and Cure," 25 cents  
 Has helped hundreds.  
**FRED W. CLEMENT**  
 5 PLEASANT STREET WORCESTER, MASS.

1903 "We manufacture the celebrated Eclipse cornet & trombone and are in a position to repair all brands of band instruments at short notice." (December ad)

1904 Leland & Son is on a list of band instrument makers in the November *Music Trade Review*.

1907 "E. E. Bagley, the well-known bandmaster & solo trombonist, has taken charge of the band instrument department of S.R. Leland & Son, #446 Main St." (*MTR*, May)

c1908 Frank Leland moved the store to the Knowles building at #516-522 Main St (photo 1). The "Richard's Map" of 1911 (photo 2) shows the #446 Main St location as "National Bank" and the earliest mention of the Worcester County National Bank at this location is from 1908, when Frank Drury was elected president. It's likely that all Eclipse brass making ended with the move. The highest number cornet found is #978 (photo 3 from auction).

1913 A list of musical instrument makers in Worcester does not include Leland.

1915 Frank Leland died from heart problems that started five weeks earlier with a hiccup attack. The store is presently located in the Knowles building and was under Frank's management until his death (*MTR*, May).

1915 (*Music Trade Review*, July 24<sup>th</sup>) "The old-time business of S. R. Leland & Son, in the Knowles building, Worcester, Mass., has been purchased by the Steere Music Co. of that city. The stock taken over consists of pianos, player pianos, band instruments, and musical merchandise." (photo 4 is from the obituary)



Worcester  
 Illustrated and Musical Circular  
 Spring, 1879.

**S. R. LELAND & CO.,**  
 PIANO FORTE AND ORGAN WAREHOUSE,  
 Band Instruments and Sheet Music,  
 448 MAIN STREET, WORCESTER, MASS.

CHICKERING & SONS S. R. LELAND & CO. Mason & Hamlin Organs

## Summary of Eclipse Band Instruments Found:

**Cornets:** After finding Eclipse cornet #160 in 2001, I began to collect every Leland instrument that I could find; either physically or in photos. Cornets go up to #978 which averages out to 45 per year from 1886 to 1908 when I am assuming they ended. The Clement and Church models are not marked that way but have to be compared to advertising to see if they match. The only marked special model is the “Rex” which has a Z-shaped fixed lead pipe and came out near the end of production.

Only one Eb cornet (photo 1, author’s collection) has been found and is said to have been used in the Spanish-American War in 1898 where it suffered a bullet through the bell (photo 2). This has serial #860 but the style matches with Bb models around #540 so would match well with the 1898 story.

**Trombones:** The Eclipse models were made from near the start and the earliest one I have found is #198. This has the same ivy engraving design as on cornet #160 so should date to the late 1880s. I have only found two others, one with no serial number given and the other is very late with “Trademark” added to the bell design (photo 3, internet auction) so would date to the early 1900s and fits with the 1903 article above which states they were still making them.

I have also seen two “New Ideal” model trombones, one slide model that I had in my collection (below) and one valve model (Horn-u-copia.net).



**Tubas:** All Eclipse tubas are Eb models and at one time I owned all three that I have ever found. The serial numbers don’t match the cornets so these have to be dated by comparison to logo styles. #7427 & #7435 (photo 4) look like mid-1890s logos and #872 is c.1900.

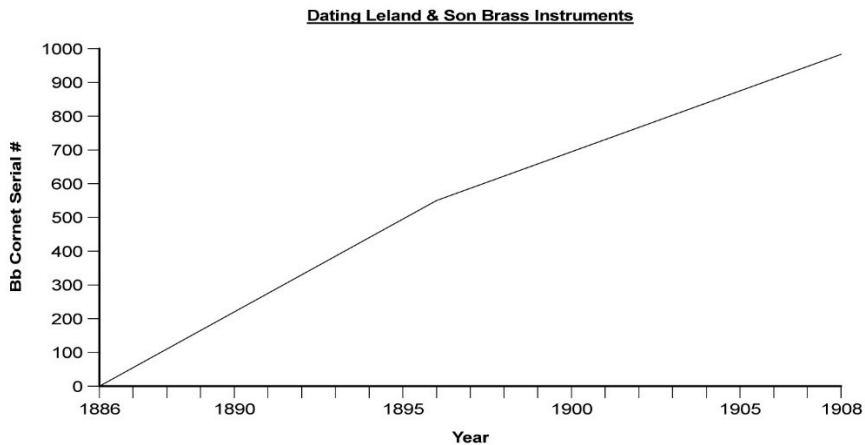
New Ideal models are also Eb and have serial numbers around 3000.





## Dating Leland Instruments:

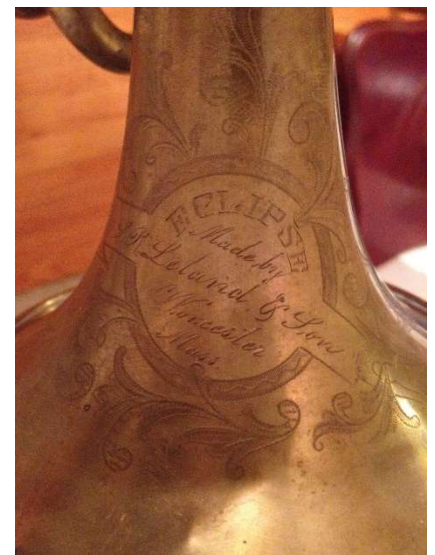
I put together all the information I had on Eclipse Bb cornets and came up with this graph below which shows a nearly steady production of 1,000 instruments over 22 years.



“New Ideal” models I have found have serial numbers in the 2600 to 3100 range and may all date to the mid-1890s. The only Helicon tuba I have seen (photo 1 courtesy Joe Murphy) was once played in the Jack Daniels Silver Cornet Band at the turn of the century. It matches one shown in the 1885 catalog (photo 2). One tuba collector says that New Ideal tubas appear to be by Jerome Thibouville Lamy, as the styles are similar.

## Eclipse Logo Styles:

1. 1880s with ivy engraving; cornets #150 (photo 3), 160 & 272; trombone #198
2. c.1892 round logo w/diagonal banner and cursive writing; cornet #308 (photo 4)
3. c.1895 round logo w/diagonal banner and block lettering; cornets #459 to 608 (#543 below L); tubas #7427 & 7435



4. The final logo style takes them to the end of production with an oval center and block letter Eclipse in the center (#740 above R).

5. The only variation near the end of production is on some tubas and trombones with a wreath surrounding the name (photo 1, #872).

### Biographies:

**Samuel Reeves Leland** was the company founder born in Sherborn, MA on May 12, 1817 to Deacon Daniel Leland whose ancestors came from Yorkshire, England. He moved to Worcester in 1839 and married Mary Draper (1821-1910) in 1844. Their first child Frank was born in 1846 and a second child, Julietta, was born in 1848 but lived only until 1851.

Samuel was an organist for the Second Congregational Church for 27 years starting in 1839 then later played for the Central and Unity churches. It was said that he never missed organ duty in 50 years of service. He also taught music in the Worcester area for 25 years including 21 years at the College of the Holy Cross.

He died on January 14, 1885, at age 67 following about five years of bad health. His residence was #118 Lincoln St which he had built in 1872. (photo 2)

**Francis (Frank) Augustus Leland** (photo 4) was the only surviving child of Samuel and was born on April 22, 1846 in Worcester. He was educated at the Highland Military Academy then became a junior partner in the family business. He was also an accomplished flute player.

After his father's death in 1885, Frank started making the Eclipse line of instruments, adding a new focus for the company. It was said that he patented the design but nothing is found to back this up. The "Trademark" name appears later but this was never a registered name with the government.

Frank married Harriet (Hattie) Lapham in 1873 and they had one daughter, Hattie May Leland, born in 1879. His home in 1904 was at #653 Main St next to the First Baptist church at the corner of Ionic Ave (both buildings now gone). This was a grand Greek Revival home called the Wheeler-Bullock mansion (photo 3) built in 1843 by Elias Carter.

Frank died on May 15, 1915 and the business was sold a few months later. His daughter Hattie married later that year.

\***Charles A. Anger** was born in Germany on July 4, 1847. He emigrated to the US in 1866 and was naturalized in 1871. His 1872 marriage record lists him as an instrument maker in Worcester which likely would have been for Isaac Fiske. It's possible that when Fiske sold out to Conn in 1887 that Leland picked up some of his workers to start the Eclipse brass.

Charles is listed as an instrument maker at his death on February 10, 1907. This may have led Leland to end manufacturing.



**Leland & Son store:** 446 Main St in 1896 at right.

### Leland Engravings:

One possible engraver for the Leland Eclipse instruments would be Henry Franklin Leland (1849-1942) who established an engraving business in Worcester in 1868. He seems to be the only engraver in the city who did work outside of printing. There is no close connection to the S. R. Leland family, but they were likely related.



**H.F. LELAND**  
**ENGRAVER**  
406 MAIN ST.  
WORCESTER, MASS.

**Established 1868.**

Cards, Wedding Invitations and Announcements are in the latest New York Styles.

Door Plates are of Best quality.

General Engraving upon Watches, Jewelry and Silverware is executed in artistic manner.

Designs and estimates furnished upon application, at

*406 Main Street.*      *H. F. Leland's.*

1873 At #333 Main St.

1883-84 At #345 Main St.

1889 At #386 Main St.

1907 At #406 Main St (city directory ad above).

1920 Shop at #5 Pleasant St and this is the last year he is listed in the census as an engraver.

